

# ESR-1221 N Wireless Broadband Router

## Quick Start Guide

### **CHECK**

- A standard CD-ROM drive
- Internet connection should be setup & ready to use (ADSL or cable modem).
- Modem must provide RJ45 port to connect with ESR-1221 N.
- Microsoft Windows compatible PC/Notebook with UPnP enabled network adapter
- CAT 5 network cable(s), RJ45 port on PC/Notebook.
- Internet Browser (Microsoft Internet Explorer, Firefox and Netscape navigator.)

### **STEP 1**

Connect the power adapter supplied with the ESR-122N to the power socket on the back of this device. Check to see that the power LED on the front of the panel of the ESR-1221N is turned ON.

### **STEP 2**

Connect **ESR-1221 N LAN** port & **PC/Notebook RJ45** port with network cable.

### **STEP 3**

Run the web browser on your computer. In the address field, type the default IP address `http://192.168.0.1`.



The following login screen will appear. Enter **admin** for both Username and Password.



#### Step 4

Select 'WAN Interface' and Select 'DHCP Client' on WAN Access Type.

\*\*For Cable modem users Click 'Clone MAC Address' and 'Apply Changes'

Wireless Network Broadband RouterAP Router Mode ▾

Status**Dynamic IP**Static IPPPPoEPPTPL2TP3G

You can select the type of the account you have with your ISP provider.

<b>Hostname :</b>	<input type="text"/>
<b>MAC address :</b>	<input type="text" value="000000000000"/> <input type="button" value="Clone MAC"/>
<b>DNS Servers</b>	
<b>DNS Servers Type</b>	From ISP ▾
<b>First DNS Server</b>	<input type="text" value="0.0.0.0"/>
<b>Second DNS Server</b>	<input type="text" value="0.0.0.0"/>

\* For DSL users just Click 'Apply Changes' for system to take effect.

Wireless Network Broadband RouterAP Router Mode ▾

StatusDynamic IPStatic IP**PPPoE**PPTPL2TP3G

You can select the type of the account you have with your ISP provider.

<b>Username :</b>	<input type="text"/>
<b>Password :</b>	<input type="text"/>
<b>Service Name</b>	<input type="text"/>
<b>MTU :</b>	<input type="text" value="1492"/> (512<=MTU Value <=1492)
<b>Authentication type :</b>	Auto ▾
<b>Type :</b>	Keep Connection ▾
<b>Idle Timeout :</b>	<input type="text" value="10"/> (1-1000 Minutes )

#### Step 5

Click 'Wireless' and select 'Basic Settings' to change SSID to desired identity and Click 'Apply Changes' to take effect.

**Wireless Network Broadband Router** AP Router Mode

**Basic** | **Advanced** | **Security** | **Filter** | **WPS** | **Client List** | **Policy**

This page allows you to define SSID, and Channel for the wireless connection. These parameters are used for the wireless stations to connect to the Access Point.

**Radio :**  Enable  Disable

**Mode :** AP

**Band :** 2.4 GHz (B+G)

**Enable SSID#:** 1

**SSID1 :** 9350

**Auto Channel :**  Enable  Disable

**Channel :** 11

## Step 6

### Setup WiFi Security

Click on 'Wireless' and Click on 'Security' to define WiFi encryption. Next Click on 'Apply Changes' to take effect.

**Wireless Network Broadband Router** AP Router Mode

**Basic** | **Advanced** | **Security** | **Filter** | **WPS** | **Client List** | **Policy**

This page allows you setup the wireless security. Turn on WEP or WPA by using Encryption Keys could prevent any unauthorized access to your wireless network.

**SSID Selection :** 9350

**Broadcast SSID :** Enable

**WMM :** Enable

**Encryption :**   
 **Enable 802.1x Authentication**

- Disable
- WEP
- WPA pre-shared key
- WPA RADIUS

### Note

Once setup is completed, power off modem and router. Power up the modem and router at the same time and wait for both the modem and router to completely initialize. Refer to the User's manual for more detailed explanation of each operating mode.

# ESR-1221N bezdrátový širokopásmový směrovač

## Stručná příručka

### KONTROLA

- Standardní jednotka CD-ROM
- Internetové připojení musí být nakonfigurované a připravené k použití (ADSL nebo kabelový modem).
- Modem musí být vybaven portem RJ45 pro připojení k ESR-1221N.
- Počítač/notebook kompatibilní s operačním systémem Microsoft Windows se síťovým adaptérem s aktivovaným standardem UPnP
- Síťový kabel(y) CAT 5, port RJ45 v počítači/notebooku.
- Internetový prohlížeč (Microsoft Internet Explorer, Firefox a Netscape Navigator.)

### KROK 1

Připojte napájecí adaptér dodaný s ESR-1221N k elektrické zásuvce na zadní straně tohoto zařízení. Zkontrolujte, zda indikátor LED napájení na předním panelu ESR-1221N SVÍTÍ.

### KROK 2

Propojte **port LAN ESR-1221N** a **port RJ45 počítače/notebooku** síťovým kabelem.

### KROK 3

Spusťte webový prohlížeč ve vašem počítači. Do adresního řádku zadejte výchozí adresu IP `http://192.168.0.1`.



Zobrazí se následující obrazovka pro přihlášení. Zadejte **admin** jako Username (Uživatelské jméno) a Password (Heslo).



#### Krok 4

Vyberte 'WAN Interface' (Rozhraní WAN) a vyberte 'DHCP Client' (Klient DHCP) v části WAN Access Type (Typ přístupu WAN).

\*\*Uživatelé kabelového modemu klepnou na 'Clone MAC Address' (Klonovat adresu MAC) a 'Apply Changes' (Použít změny)

Wireless Network Broadband Router AP Router Mode

Status **Dynamic IP** Static IP PPPoE PPTP L2TP 3G

You can select the type of the account you have with your ISP provider.

Hostname :

MAC address :

DNS Servers

DNS Servers Type

First DNS Server

Second DNS Server

\* Pro uživatele DSL se změny systému projeví klepnutím na 'Apply Changes' (Použít změny).

Wireless Network Broadband Router AP Router Mode

Status Dynamic IP Static IP **PPPoE** PPTP L2TP 3G

You can select the type of the account you have with your ISP provider.

Username :

Password :

Service Name

MTU :  (512<=MTU Value <=1492)

Authentication type :

Type :

Idle Timeout :  (1-1000 Minutes )

#### Krok 5

Klepněte na 'Wireless' (Bezdrátové), vyberte 'Basic Settings' (Základní nastavení) a změňte SSID na požadovanou identitu; změny se projeví po klepnutí na 'Apply Changes' (Použít změny).

**Wireless Network Broadband Router** AP Router Mode ▾

**Basic** | Advanced | Security | Filter | WPS | Client List | Policy

This page allows you to define SSID, and Channel for the wireless connection. These parameters are used for the wireless stations to connect to the Access Point.

**Radio :**  Enable  Disable

**Mode :** AP ▾

**Band :** 2.4 GHz (B+G) ▾

**Enable SSID#:** 1 ▾

**SSID1 :** 9350

**Auto Channel :**  Enable  Disable

**Channel :** 11 ▾

## Krok 6

### Konfigurace zabezpečení WiFi

Klepněte na 'Wireless' (Bezdrátové) a klepnutím na 'Security' (Zabezpečení) definujte šifrování WiFi. Změna se projeví po klepnutí na 'Apply Changes' (Použít změny).

**Wireless Network Broadband Router** AP Router Mode ▾

**Basic** | **Advanced** | Security | Filter | WPS | Client List | Policy

This page allows you setup the wireless security. Turn on WEP or WPA by using Encryption Keys could prevent any unauthorized access to your wireless network.

**SSID Selection :** 9350 ▾

**Broadcast SSID :** Enable ▾

**WMM :** Enable ▾

**Encryption :** Disable ▾

Enable 802.1x Authentication

- Disable
- WEP
- WPA pre-shared key
- WPA RADIUS

### Poznámka

Po dokončení konfigurace vypněte modem a směrovač. Zapněte modem a směrovač současně a počkejte, až se modem a směrovač zcela inicializují. Podrobnější popis jednotlivých provozních režimů viz Uživatelská příručka.

# ESR-1221N Draadloze breedbandrouter

## Snelstartgids

### Controleer

- Een standaard cd-romstation
- Internetverbinding moet klaar zijn voor gebruik (ADSL of kabelmodem).
- Modem moet zijn voorzien van RJ45-poort om verbinding te maken met de ESR-1221N .
- Microsoft Windows compatibel PC/notebook met netwerkadapter waarop UPnP is ingeschakeld
- CAT 5 netwerkkabel(s), RJ45-poort op PC/notebook.
- Internetbrowser (Microsoft Internet Explorer, Firefox of Netscape navigator.)

### Stap 1

Sluit de met de ESR-1221N meegeleverde voedingsadapter aan op de aansluiting achterop het apparaat. Controleer of de voedings-LED op de voorkant van de ESR-1221N oplicht.

### Stap 2

Verbind de **ESR-1221N LAN**-poort en de **PC/Notebook RJ45**-poort met een netwerkkabel.

### Stap 3

Start een webbrower op de computer. Typ in het adresveld het standaard IP-adres `http://192.168.0.1`.



Het volgende aanmeldvenster verschijnt. Typ **admin** voor zowel Username (Gebruikersnaam) als Password (Wachtwoord).



#### Stap 4

Selecteer 'WAN Interface' (WAN-aansluiting) en selecteer 'DHCP Client' (DHCP-client) in WAN Access Type.

\*\*Gebruikers van een kabelmodem klikken op 'Clone MAC Address' (MAC-adres klonen) en op 'Apply Changes' (Wijzigingen toepassen)

Wireless Network Broadband Router AP Router Mode

[Status](#) [Dynamic IP](#) [Static IP](#) [PPPoE](#) [PPTP](#) [L2TP](#) [3G](#)

You can select the type of the account you have with your ISP provider.

Hostname :

MAC address :

DNS Servers

DNS Servers Type

First DNS Server

Second DNS Server

\* DSL-gebruikers klikken alleen op 'Apply Changes' (Wijzigingen toepassen).

Wireless Network Broadband Router AP Router Mode

[Status](#) [Dynamic IP](#) [Static IP](#) [PPPoE](#) [PPTP](#) [L2TP](#) [3G](#)

You can select the type of the account you have with your ISP provider.

Username :

Password :

Service Name

MTU :  (512<=MTU Value <=1492)

Authentication type :

Type :

Idle Timeout :  (1-1000 Minutes )

#### Stap 5

Klik op 'Wireless' (Draadloos) en selecteer 'Basic Settings' (basisinstellingen) om de SSID de gewenste instelling te geven en klik op 'Apply Changes' om dit door te voeren.



**Wireless Network Broadband Router** AP Router Mode ▾

**Basic** | Advanced | Security | Filter | WPS | Client List | Policy

This page allows you to define SSID, and Channel for the wireless connection. These parameters are used for the wireless stations to connect to the Access Point.

**Radio :**  Enable  Disable

**Mode :** AP ▾

**Band :** 2.4 GHz (B+G) ▾

**Enable SSID#:** 1 ▾

**SSID1 :** 9350

**Auto Channel :**  Enable  Disable

**Channel :** 11 ▾

## Step 6

### WiFi-beveiliging instellen

Klik op 'Wireless' (Draadloos) en klik op 'Security' (Beveiliging) om de WiFi-versleuteling in te stellen. Klik vervolgens op 'Apply Changes' (Wijzigingen toepassen) om de wijzigingen toe te passen.

**Wireless Network Broadband Router** AP Router Mode ▾

**Basic** | **Advanced** | Security | Filter | WPS | Client List | Policy

This page allows you setup the wireless security. Turn on WEP or WPA by using Encryption Keys could prevent any unauthorized access to your wireless network.

**SSID Selection :** 9350 ▾

**Broadcast SSID :** Enable ▾

**WMM :** Enable ▾

**Encryption :** Disable ▾

Enable 802.1x Authentication

Disable  
 WEP  
 WPA pre-shared key  
 WPA RADIUS

### Opmerking

Schakel modem en router uit nadat de installatie is voltooid. Schakel modem en router tegelijk in en wacht tot zowel modem als router volledig zijn geïnitieerd. Zie de gebruikershandleiding voor een uitgebreider uitleg van elke gebruiksmodus.

# ESR-1221N langaton laajakaistareititin

## Pika-aloitusopas

### **TARKISTA**

- Standardi CD-ROM-asema
- Internet-yhteyden tulee olla asetettu ja valmis käytettäväksi (ADSL tai kaapelimodeemi).
- Modeemissa tulee olla RJ45-portti ESR-1221N:n liittämiseen.
- Microsoft Windows -yhteensopiva PC/Kannettava, jossa UPnP-verkkosovitin
- CAT 5 -verkkokaapeli(t), RJ45-portti PC:ssä/Kannettavassa.
- Internet-selain (Microsoft Internet Explorer, Firefox ja Netscape navigator.)

### **VAIHE 1**

Liitä ETR-1221N:n toimitukseen kuuluva verkkolaite tämän laitteen takana olevaan vastakkeeseen. Tarkista, että ETR-1221N:n etupaneelissa oleva virran merkkivalo syttyy.

### **VAIHE 2**

Liitä **ESR-1221N LAN** -portti ja **PC:n/Kannettavan RJ45**-portti verkkokaapelilla.

### **VAIHE 3**

Käynnistä tietokoneen web-selain. Näppäile osoitekenttään oletus-IP-osoite  
http://192.168.0.1.



Seuraava kirjautumisnäyttö tulee näkyviin. Anna käyttäjänimeksi ja salasanaksi **admin**.



#### Vaihe 4

Valitse WAN Interface (WAN-käyttöliittymä) ja valitse WAN-käyttötyypiksi DHCP Client (DHCP-asiakas).

\*\*Jos käytät kaapelimodeemia, napsauta Clone MAC Address (Kloonaa MAC-osoite) ja Apply Changes (Käytä muutoksia)

Wireless Network Broadband RouterAP Router Mode ▾

Status**Dynamic IP**Static IPPPPoEPPTPL2TP3G

You can select the type of the account you have with your ISP provider.

<b>Hostname :</b>	<input style="width: 100%;" type="text"/>
<b>MAC address :</b>	<input style="width: 80%;" type="text" value="000000000000"/> <input style="width: 15%; border: 1px solid #ccc;" type="button" value="Clone MAC"/>
<b>DNS Servers</b>	
<b>DNS Servers Type</b>	<input style="width: 80%;" type="text" value="From ISP"/> ▾
<b>First DNS Server</b>	<input style="width: 80%;" type="text" value="0.0.0.0"/>
<b>Second DNS Server</b>	<input style="width: 80%;" type="text" value="0.0.0.0"/>

\* DSL-käyttäjille riittää muutosten ottamiseksi käyttöön Apply Changes (Käytä muutoksia) - valinnan napsauttaminen.

Wireless Network Broadband RouterAP Router Mode ▾

Status**Dynamic IP**Static IPPPPoEPPTPL2TP3G

You can select the type of the account you have with your ISP provider.

<b>Username :</b>	<input style="width: 100%;" type="text"/>
<b>Password :</b>	<input style="width: 100%;" type="text"/>
<b>Service Name</b>	<input style="width: 100%;" type="text"/>
<b>MTU :</b>	<input style="width: 80%;" type="text" value="1492"/> (512<=MTU Value <=1492)
<b>Authentication type :</b>	<input style="width: 80%;" type="text" value="Auto"/> ▾
<b>Type :</b>	<input style="width: 80%;" type="text" value="Keep Connection"/> ▾
<b>Idle Timeout :</b>	<input style="width: 80%;" type="text" value="10"/> (1-1000 Minutes )

#### Vaihe 5

Napsauta Wireless (Langaton) ja valitse Basic Settings (Perusasetukset) ja muuta SSID-verkkonimi haluamaksesi ja ota muutokset käyttöön napsauttamalla Apply Changes (Käytä muutoksia).

**Wireless Network Broadband Router** AP Router Mode

**Basic** | Advanced | Security | Filter | WPS | Client List | Policy

This page allows you to define SSID, and Channel for the wireless connection. These parameters are used for the wireless stations to connect to the Access Point.

**Radio :**  Enable  Disable

**Mode :** AP

**Band :** 2.4 GHz (B+G)

**Enable SSID#:** 1

**SSID1 :** 9350

**Auto Channel :**  Enable  Disable

**Channel :** 11

## Vaihe 6

### WiFi-suojauksen asettaminen

Määritä WiFi-salaus napsauttamalla Wireless (Langaton) ja sitten Security (Suojaus). Ota muutokset käyttöön napsauttamalla Apply Changes (Käytä muutoksia).

**Wireless Network Broadband Router** AP Router Mode

**Basic** | **Advanced** | Security | Filter | WPS | Client List | Policy

This page allows you setup the wireless security. Turn on WEP or WPA by using Encryption Keys could prevent any unauthorized access to your wireless network.

**SSID Selection :** 9350

**Broadcast SSID :** Enable

**WMM :** Enable

**Encryption :** Disable

Enable 802.1x Authentication

- Disable
- WEP
- WPA pre-shared key
- WPA RADIUS

### Huomautus

**Kun asetus on valmis, sammuta modeemi ja reititin. Käynnistä modeemi ja reititin yhtä aikaa ja odota, että sekä modeemi että reititin tulevat molemmat kokonaan alustetuksi. Katso käyttöoppaasta yksityiskohtaiset selitykset kustakin käyttötilasta.**

# Router sans fil à large bande **ESR-1221N**

## Guide de démarrage rapide

### À CONTRÔLER

- Un lecteur de CD-ROM standard
- La connexion Internet doit être configurée et prête à être utilisée (ADSL ou modem câblé).
- Le modem doit disposer d'un port RJ45 pour se connecter avec le ESR-1221N.
- Microsoft Windows compatible avec un ordinateur de bureau/portable, avec un adaptateur réseau UPnP actif
- Un/plusieurs câbles réseau CAT 5, un port RJ45 disponible sur l'ordinateur de bureau/portable.
- Un navigateur Internet (Microsoft Internet Explorer, Firefox et Netscape.)

### ÉTAPE 1

Branchez l'adaptateur d'alimentation fourni avec le ESR-1221N, sur la prise d'alimentation à l'arrière de l'appareil. Vérifiez le voyant DEL d'alimentation sur le panneau avant du ESR-1221N. Il doit être ALLUMÉ.

### ÉTAPE 2

Connectez le port **LAN du ESR-1221N** & le port RJ45 de l'**ordinateur de bureau/portable** avec le câble réseau.

### ÉTAPE 3

Lancez le navigateur Internet sur votre ordinateur. Dans le champ adresse, saisissez l'adresse IP par défaut, <http://192.168.0.1>.



L'écran de connexion suivant apparaît. Saisissez **admin** comme nom d'utilisateur et comme mot de passe.



## Étape 4

Choisissez 'WAN Interface' (Interface WAN) et 'DHCP Client' (Client DHCP) comme type d'accès WAN.

\*\*Pour les utilisateurs du modem câblé, cliquez sur 'Clone MAC Address' (Dupliquer l'adresse MAC) et 'Apply Changes' (Appliquer les modifications)

Wireless Network Broadband RouterAP Router Mode ▾

StatusDynamic IPStatic IPPPPoEPPTPL2TP3G

You can select the type of the account you have with your ISP provider.

<b>Hostname :</b>	<input type="text"/>
<b>MAC address :</b>	<input type="text" value="000000000000"/> <input type="button" value="Clone MAC"/>
<b>DNS Servers</b>	
<b>DNS Servers Type</b>	<input type="text" value="From ISP"/> ▾
<b>First DNS Server</b>	<input type="text" value="0.0.0.0"/>
<b>Second DNS Server</b>	<input type="text" value="0.0.0.0"/>

\* Pour les utilisateurs DSL, cliquez sur 'Apply Changes' (Appliquer les modifications) pour les valider.

Wireless Network Broadband RouterAP Router Mode ▾

StatusDynamic IPStatic IPPPPoEPPTPL2TP3G

You can select the type of the account you have with your ISP provider.

<b>Username :</b>	<input type="text"/>
<b>Password :</b>	<input type="text"/>
<b>Service Name</b>	<input type="text"/>
<b>MTU :</b>	<input type="text" value="1492"/> (512<=MTU Value <=1492)
<b>Authentication type :</b>	<input type="text" value="Auto"/> ▾
<b>Type :</b>	<input type="text" value="Keep Connection"/> ▾
<b>Idle Timeout :</b>	<input type="text" value="10"/> (1-1000 Minutes )

## Étape 5

Cliquez sur 'Wireless' (Sans fil) et sélectionnez 'Basic Settings' (Réglages de base) pour modifier le SSID en lui donnant l'identité voulue. Cliquez sur 'Apply Changes' (Appliquer les modifications) pour les valider.

**Wireless Network Broadband Router** AP Router Mode ▾

**Basic** | **Advanced** | **Security** | **Filter** | **WPS** | **Client List** | **Policy**

This page allows you to define SSID, and Channel for the wireless connection. These parameters are used for the wireless stations to connect to the Access Point.

**Radio :**  Enable  Disable

**Mode :** AP ▾

**Band :** 2.4 GHz (B+G) ▾

**Enable SSID#:** 1 ▾

**SSID1 :** 9350

**Auto Channel :**  Enable  Disable

**Channel :** 11 ▾

## Étape 6

### Configuration de la sécurité WiFi

Cliquez sur 'Wireless' (Sans fil), puis sur 'Security' (Sécurité) pour définir le cryptage WiFi.

Cliquez ensuite sur 'Apply Changes' (Appliquer les modifications) pour les valider.

**Wireless Network Broadband Router** AP Router Mode ▾

**Basic** | **Advanced** | **Security** | **Filter** | **WPS** | **Client List** | **Policy**

This page allows you setup the wireless security. Turn on WEP or WPA by using Encryption Keys could prevent any unauthorized access to your wireless network.

**SSID Selection :** 9350 ▾

**Broadcast SSID :** Enable ▾

**WMM :** Enable ▾

**Encryption :** Disable ▾

Enable 802.1x Authentication

Disable  
 WEP  
 WPA pre-shared key  
 WPA RADIUS

### Remarque

**Une fois la configuration effectuée, mettez le modem et le routeur hors tension. Remettez-les sous tension en même temps, et patientez le temps de l'initialisation complète du modem et du routeur. Veuillez vous référer au Mode d'emploi pour obtenir plus de détails sur chaque mode de fonctionnement.**

# ESR-1221N Kabelloser Breitband-Router

## Schnellstartanleitung

### Anforderungen prüfen

- Ein herkömmliches CD-ROM-Laufwerk
- Eingerichtete, einsatzbereite Internetverbindung (ADSL- oder Kabelmodem)
- Modem mit RJ45-Port zum Anschließen des ESR-1221N
- Microsoft Windows-kompatibler Desktop-/Notebook-PC mit UPnP-fähigem Netzwerkadapter
- CAT 5-Netzwerkkabel, RJ45-Port am Desktop/Notebook-PC
- Internet-Browser (Microsoft Internet Explorer, Firefox und Netscape Navigator)

### Schritt 1

Verbinden Sie das im Lieferumfang des ESR-1221N enthaltene Netzteil mit dem Netzanschluss an der Rückseite dieses Gerätes. Prüfen Sie, ob die Betriebs-LED an der Frontblende des ESR-1221N leuchtet.

### Schritt 2

Verbinden Sie den **LAN-Port des ESR-1221N** über ein Netzwerkkabel mit dem **RJ45-Port des Desktop/Notebook-PCs**.

### Schritt 3

Führen Sie den Webbrowser an Ihrem Computer aus. Geben Sie in das Adressfeld die Standard-IP-Adresse `http://192.168.0.1` ein.



Der folgende Anmeldebildschirm wird angezeigt. Geben Sie bei Benutzernamen und Kennwort **admin** ein.





#### Schritt 4

Wählen Sie „WAN Interface (WAN-Schnittstelle)“ und anschließend „DHCP Client (DHCP-Client)“ als WAN-Zugangstyp.

\*\*Benutzer eines Kabelmodems klicken auf „Clone MAC Address (MAC-Adresse klonen)“ und dann auf „Apply Changes (Änderungen übernehmen)“.

The screenshot shows the 'Dynamic IP' configuration page. At the top, there is a header 'Wireless Network Broadband Router' and a dropdown menu set to 'AP Router Mode'. Below the header is a navigation bar with tabs: 'Status', 'Dynamic IP', 'Static IP', 'PPPoE', 'PPTP', 'L2TP', and '3G'. The 'Dynamic IP' tab is selected. The main content area contains the following fields and options:

- Hostname :
- MAC address :
- DNS Servers
  - DNS Servers Type :
  - First DNS Server :
  - Second DNS Server :

At the bottom right, there are two buttons: 'Apply' and 'Cancel'.

\* DSL-Benutzer klicken zur Übernahme der Einstellungen durch das System einfach auf „Apply Changes (Änderungen übernehmen)“.

The screenshot shows the 'PPPoE' configuration page. At the top, there is a header 'Wireless Network Broadband Router' and a dropdown menu set to 'AP Router Mode'. Below the header is a navigation bar with tabs: 'Status', 'Dynamic IP', 'Static IP', 'PPPoE', 'PPTP', 'L2TP', and '3G'. The 'PPPoE' tab is selected. The main content area contains the following fields and options:

- Username :
- Password :
- Service Name :
- MTU :  (512<=MTU Value <=1492)
- Authentication type :
- Type :
- Idle Timeout :  (1-1000 Minutes )

At the bottom right, there are two buttons: 'Apply' and 'Cancel'.

#### Schritt 5

Klicken Sie auf „Wireless (Drahtlos)“, wählen Sie zum Ändern der SSID auf die gewünschte Identität „Basic Settings (Grundeinstellungen)“; klicken Sie dann zur Übernahme auf „Apply Changes (Änderungen übernehmen)“.

**Wireless Network Broadband Router** AP Router Mode ▾

**Basic** | **Advanced** | **Security** | **Filter** | **WPS** | **Client List** | **Policy**

This page allows you to define SSID, and Channel for the wireless connection. These parameters are used for the wireless stations to connect to the Access Point.

**Radio :**  Enable  Disable

**Mode :** AP ▾

**Band :** 2.4 GHz (B+G) ▾

**Enable SSID#:** 1 ▾

**SSID1 :** 9350

**Auto Channel :**  Enable  Disable

**Channel :** 11 ▾

## Schritt 6

### Wi-Fi-Sicherheit einrichten

Klicken Sie auf „Wireless (Drahtlos)“ und anschließend zur Bestimmung der Wi-Fi-Verschlüsselung auf „Security (Sicherheit)“. Klicken Sie anschließend zur Übernahme auf „Apply Changes (Änderungen übernehmen)“.

**Wireless Network Broadband Router** AP Router Mode ▾

**Basic** | **Advanced** | **Security** | **Filter** | **WPS** | **Client List** | **Policy**

This page allows you setup the wireless security. Turn on WEP or WPA by using Encryption Keys could prevent any unauthorized access to your wireless network.

**SSID Selection :** 9350 ▾

**Broadcast SSID :** Enable ▾

**WMM :** Enable ▾

**Encryption :** Disable ▾

**Enable 802.1x Authentication**

Disable  
 WEP  
 WPA pre-shared key  
 WPA RADIUS

## Hinweis

**Schalten Sie Modem und Router aus, sobald die Einrichtung abgeschlossen ist. Schalten Sie Modem und Router dann gleichzeitig ein und warten Sie, bis Modem und Router vollständig initialisiert sind. Detaillierte Erklärungen der einzelnen Betriebsmodi entnehmen Sie bitte der Bedienungsanleitung.**

# ESR-1221N Ασύρματος ευρυζωνικός δρομολογητής

## Εγχειρίδιο Γρήγορης Εκκίνησης

### ΕΛΕΓΧΟΣ

- Μία τυπική μονάδα CD-ROM
- Η σύνδεση Internet θα πρέπει να ρυθμιστεί & να ετοιμαστεί για χρήση (ADSL ή καλωδιακό μόντεμ).
- Το μόντεμ πρέπει να διαθέτει θύρα RJ45 για σύνδεση με το ESR-1221N.
- Η/Υ/Φορητός υπολογιστής συμβατός με Microsoft Windows με τροφοδοτικό δικτύου με ενεργοποιημένο το UPnP
- Καλώδιο(α) δικτύου CAT 5, θύρα RJ45 στον Η/Υ/Φορητό υπολογιστή.
- Πρόγραμμα περιήγησης Internet (Πλοηγτής Microsoft Internet Explorer, Firefox και Netscape.)

### **ΒΗΜΑ 1**

Συνδέστε το τροφοδοτικό που παρέχεται με το ESR-1221N στην πρίζα ρεύματος στο πίσω μέρος της συσκευής. Ελέγξτε για να δείτε εάν το LED τροφοδοσίας στο πίσω μέρος του πίνακα του ESR-1221N έχει ενεργοποιηθεί.

### **ΒΗΜΑ 2**

Συνδέστε τη θύρα **ESR-1221N LAN** & τη θύρα **RJ45 Η/Υ/Φορητού υπολογιστή** με καλώδιο δικτύου.

### **ΒΗΜΑ 3**

Εκτελέστε το πρόγραμμα περιήγησης Web στον υπολογιστή σας. Στο πεδίο διεύθυνσης, πληκτρολογήστε την προεπιλεγμένη διεύθυνση IP <http://192.168.0.1>.



Θα εμφανιστεί η ακόλουθη οθόνη σύνδεσης. Εισάγετε **admin** και για Username (Όνομα χρήστη) και για Password (Κωδικό πρόσβασης).



## Βήμα 4

Επιλέξτε WAN Interface (Διεπαφή WAN)' και επιλέξτε 'DHCP Client (Πελάτης DHCP)' στον Τύπο πρόσβασης WAN.

\*\*Για χρήστες καλωδιακού μόντεμ, κάντε κλικ στο 'Clone MAC Address (Κλωνοποίηση διεύθυνσης MAC)' και 'Εφαρμογή αλλαγών'

**Wireless Network Broadband Router** AP Router Mode ▾

Status **Dynamic IP** Static IP PPPoE PPTP L2TP 3G

You can select the type of the account you have with your ISP provider.

<b>Hostname :</b>		
<b>MAC address :</b>	000000000000	Clone MAC
<b>DNS Servers</b>		
<b>DNS Servers Type</b>	From ISP ▾	
<b>First DNS Server</b>	0.0.0.0	
<b>Second DNS Server</b>	0.0.0.0	

Apply Cancel

\* Για χρήστες DSL, απλά κάντε κλικ στο 'Apply Changes (Εφαρμογή αλλαγών)' για να ισχύσει το σύστημα.

**Wireless Network Broadband Router** AP Router Mode ▾

Status Dynamic IP Static IP **PPPoE** PPTP L2TP 3G

You can select the type of the account you have with your ISP provider.

<b>Username :</b>		
<b>Password :</b>		
<b>Service Name</b>		
<b>MTU :</b>	1492	(512<=MTU Value <=1492)
<b>Authentication type :</b>	Auto ▾	
<b>Type :</b>	Keep Connection ▾	
<b>Idle Timeout :</b>	10	(1-1000 Minutes )

Apply Cancel

## Βήμα 5

Κάντε κλικ στο 'Wireless (Ασύρματο)' και επιλέξτε 'Basic Settings (Βασικές Ρυθμίσεις)' για να αλλάξετε το SSID στην επιθυμητή ταυτότητα και κάντε κλικ στο 'Apply Changes (Εφαρμογή αλλαγών)' για να ισχύσουν.

**Wireless Network Broadband Router** AP Router Mode ▾

**Basic** | **Advanced** | **Security** | **Filter** | **WPS** | **Client List** | **Policy**

This page allows you to define SSID, and Channel for the wireless connection. These parameters are used for the wireless stations to connect to the Access Point.

**Radio :**  Enable  Disable

**Mode :** AP ▾

**Band :** 2.4 GHz (B+G) ▾

**Enable SSID#:** 1 ▾

**SSID1 :** 9350

**Auto Channel :**  Enable  Disable

**Channel :** 11 ▾

## Βήμα 6

### Ρύθμιση ασφάλειας WiFi

Κάντε κλικ στο 'Wireless (Ασύρματο)' και κάντε κλικ στο 'Security (Ασφάλεια)' για να καθοριστεί η κρυπτογράφηση WiFi. Κάντε κλικ στο 'Apply Changes (Εφαρμογή αλλαγών)' για να ισχύσουν.

**Wireless Network Broadband Router** AP Router Mode ▾

**Basic** | **Advanced** | **Security** | **Filter** | **WPS** | **Client List** | **Policy**

This page allows you setup the wireless security. Turn on WEP or WPA by using Encryption Keys could prevent any unauthorized access to your wireless network.

**SSID Selection :** 9350 ▾

**Broadcast SSID :** Enable ▾

**WMM :** Enable ▾

**Encryption :** Disable ▾

**Enable 802.1x Authentication**

Disable  
 WEP  
 WPA pre-shared key  
 WPA RADIUS

## Σημείωση

Όταν ολοκληρωθεί η ρύθμιση, απενεργοποιήστε το μόντεμ και τον δρομολογητή. Ενεργοποιήστε το μόντεμ και τον δρομολογητή ταυτόχρονα και περιμένετε για να εκκινήσουν εντελώς το μόντεμ και ο δρομολογητής. Ανατρέξτε στο Εγχειρίδιο χρήστη για πιο λεπτομερή εξήγηση κάθε τρόπου λειτουργίας.

# ESR-1221N Vezeték nélküli szélessávú router

## Gyors üzembe helyezési útmutató

### ELLENŐRZÉS

- Szabványos CD-ROM meghajtó
- Az internet-kapcsolatnak beállítva és használatra készen kell lennie (ADSL- vagy kábelmodem).
- A modemen RJ45 csatlakozónak kell lennie, hogy össze lehessen kötni az ESR-1221N eszközzel.
- Microsoft Windows-kompatibilis PC/Notebook UPnP-képes hálózati adapterrel
- CAT 5 hálózati kábel(ek), RJ45 csatlakozó a PC/Notebook számítógépen.
- Internet böngésző (Microsoft Internet Explorer, Firefox és Netscape Navigator.)

### 1. LÉPÉS

Csatlakoztassa az ESR-1221N eszközhöz mellékelt hálózati adaptert az eszköz hátulján lévő tápcsatlakozó aljzathoz. Győződjön meg arról, hogy az ESR-1221N előlapján lévő, bekapcsolt állapotot jelző LED világít.

### 2. LÉPÉS

Kösse össze az **ESR-1221N LAN** csatlakozóját és a **PC/Notebook RJ45** csatlakozóját egy hálózati kábellel.

### 3. LÉPÉS

Indítson el egy böngészőprogramot a számítógépen. A címsorba gépelje az alapértelmezett IP-címet, azaz: `http://192.168.0.1`.



A következő bejelentkezési képernyő fog megjelenni. Mind a Username (Felhasználónév), mind a Password (Jelszó) mezőbe az **admin** szót gépelje.



#### 4. lépés

Jelölje ki a 'WAN Interface' (WAN csatoló) elemet és a WAN Access Type (WAN elérés típusa) menüben jelölje ki a 'DHCP Client' (DHCP kliens) elemet.

\*\*A kábelmodem felhasználók kattintsanak a 'Clone MAC Address' (MAC-cím klónozása) és az 'Apply Changes' (Módosítások alkalmazása) gombra.

**Wireless Network Broadband Router** AP Router Mode ▾

**Status** | **Dynamic IP** | **Static IP** | **PPPoE** | **PPTP** | **L2TP** | **3G**

You can select the type of the account you have with your ISP provider.

**Hostname :**

**MAC address :**

**DNS Servers**

**DNS Servers Type**  ▾

**First DNS Server**

**Second DNS Server**

\* A DSL felhasználók egyszerűen kattintsanak az 'Apply Changes' (Módosítások alkalmazása) gombra a módosítások érvényre juttatásához.

**Wireless Network Broadband Router** AP Router Mode ▾

**Status** | **Dynamic IP** | **Static IP** | **PPPoE** | **PPTP** | **L2TP** | **3G**

You can select the type of the account you have with your ISP provider.

**Username :**

**Password :**

**Service Name**

**MTU :**  (512<=MTU Value <=1492)

**Authentication type :**  ▾

**Type :**  ▾

**Idle Timeout :**  (1-1000 Minutes)

#### 5. lépés

Kattintson a 'Wireless' (Vezeték nélküli) elemre, és jelölje ki a 'Basic Settings' (Alapvető beállítások) menüt a SSID kívánt értékre történő módosításához, majd kattintson az 'Apply Changes' (Módosítások alkalmazása) gombra, hogy a módosítást érvényre juttassa.

**Wireless Network Broadband Router** AP Router Mode ▾

**Basic** | **Advanced** | Security | Filter | WPS | Client List | Policy

This page allows you to define SSID, and Channel for the wireless connection. These parameters are used for the wireless stations to connect to the Access Point.

**Radio :**  Enable  Disable

**Mode :** AP ▾

**Band :** 2.4 GHz (B+G) ▾

**Enable SSID#:** 1 ▾

**SSID1 :** 9350

**Auto Channel :**  Enable  Disable

**Channel :** 11 ▾

## 6. lépés

### WiFi biztonság beállítása

Kattintson a 'Wireless' (Vezeték nélküli), majd a 'Security' (Biztonság) elemre a WiFi titkosítás meghatározásához. Ezután kattintson az 'Apply Changes' (Módosítások alkalmazása) gombra a módosítások érvényre juttatásához.

**Wireless Network Broadband Router** AP Router Mode ▾

**Basic** | **Advanced** | **Security** | Filter | WPS | Client List | Policy

This page allows you setup the wireless security. Turn on WEP or WPA by using Encryption Keys could prevent any unauthorized access to your wireless network.

**SSID Selection :** 9350 ▾

**Broadcast SSID :** Enable ▾

**WMM :** Enable ▾

**Encryption :** Disable ▾

Enable 802.1x Authentication

### Megjegyzés

**A beállítás végeztével kapcsolja ki a modemet és a routert. Kapcsolja be a modemet és a routert egyszerre, és várjon, amíg mind a modem, mind a router inicializál. Az egyes üzemmódok részleteit a használati utasításban találja meg.**



# Router wireless broadband **ESR1221N**

## Guida rapida

### **VERIFICA**

- Una unità CD-ROM standard
- La connessione a Internet deve essere configurata e pronta per l'uso (ADSL o modem via cavo).
- Il modem deve essere provvisto di porta RJ45 per la connessione all'ESR-1221N.
- PC/Notebook compatibile con Microsoft Windows con adattatore di rete abilitato UPnP
- Cavo/i di rete CAT5, porta RJ45 su PC/Notebook.
- Browser Internet (Microsoft Internet Explorer, Firefox e Netscape Navigator)

### **FASE 1**

Collegare il trasformatore in dotazione con ESR1221N alla presa di corrente sul retro di questo dispositivo. Verificare che il LED di alimentazione, che si trova nella parte anteriore del pannello di ESR-1221N sia ACCESO.

### **FASE 2**

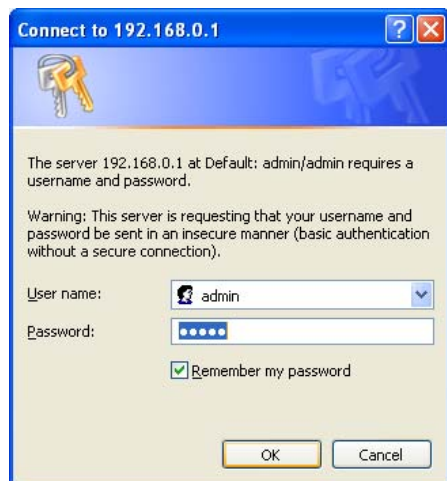
Collegare la porta **LAN ESR-1221N** e la porta **RJ45 del PC/Notebook** con il cavo di rete.

### **FASE 3**

Eeguire il browser web sul computer. Nel campo dell'indirizzo, digitare l'indirizzo IP `http://192.168.0.1`.



Verrà visualizzata la seguente schermata di accesso. Inserire **admin** per username e password.



#### Fase 4

Selezionare 'WAN Interface' (Interfaccia WAN) e poi 'DHCP Client' (Client DHCP) sul tipo di accesso WAN.

\*\*Per i modem via cavo, gli utenti devono fare clic su "Clone MAC Address" (Clona indirizzo MAC) e "Apply Changes" (Applica modifiche).

Wireless Network Broadband Router AP Router Mode

Status **Dynamic IP** Static IP PPPoE PPTP L2TP 3G

You can select the type of the account you have with your ISP provider.

**Hostname :**

**MAC address :**

**DNS Servers**

**DNS Servers Type**

**First DNS Server**

**Second DNS Server**

\* Per gli utenti DSL, basta fare clic su "Apply Changes" (Applica modifica) per rendere effettive le modifiche.

Wireless Network Broadband Router AP Router Mode

Status Dynamic IP Static IP **PPPoE** PPTP L2TP 3G

You can select the type of the account you have with your ISP provider.

**Username :**

**Password :**

**Service Name**

**MTU :**  (512<=MTU Value <=1492)

**Authentication type :**

**Type :**

**Idle Timeout :**  (1-1000 Minutes )

#### Fase 5

Fare clic su "Wireless" e selezionare "Basic Settings" (Impostazioni di base) per modificare la SSID con l'identità desiderata, quindi fare clic su "Apply Changes" (Applica modifiche) per rendere effettive le modifiche.

**Wireless Network Broadband Router** AP Router Mode ▾

**Basic** | **Advanced** | **Security** | **Filter** | **WPS** | **Client List** | **Policy**

This page allows you to define SSID, and Channel for the wireless connection. These parameters are used for the wireless stations to connect to the Access Point.

**Radio :**  Enable  Disable

**Mode :** AP ▾

**Band :** 2.4 GHz (B+G) ▾

**Enable SSID#:** 1 ▾

**SSID1 :** 9350

**Auto Channel :**  Enable  Disable

**Channel :** 11 ▾

## Fase 6

### Configurazione della sicurezza WiFi

Fare clic su "Wireless", quindi su "Security" (Sicurezza) per definire la crittazione WiFi.

Quindi fare clic su "Apply Changes" (Applica modifiche) per rendere effettive le modifiche.

**Wireless Network Broadband Router** AP Router Mode ▾

**Basic** | **Advanced** | **Security** | **Filter** | **WPS** | **Client List** | **Policy**

This page allows you setup the wireless security. Turn on WEP or WPA by using Encryption Keys could prevent any unauthorized access to your wireless network.

**SSID Selection :** 9350 ▾

**Broadcast SSID :** Enable ▾

**WMM :** Enable ▾

**Encryption :** ▾  
 Disable  
 Disable  
 WEP  
 WPA pre-shared key  
 WPA RADIUS

**Enable 802.1x Authentication**

## Nota

**Una volta completata la configurazione, spegnere modem e router. Accendere il modem e il router contemporaneamente e attendere che si inizializzino entrambi completamente. Fare riferimento al manuale di istruzioni per la spiegazione approfondita di ciascuna modalità operativa.**

# Bezprzewodowy router szerokopasmowy **ESR-1221N**

## Instrukcja szybkiego uruchomienia

### **SPRAWDŹ**

- Standardowy napęd CD-ROM
- Należy ustawić i przygotować połączenie z Internetem (Modem ADSL lub modem kablowy).
- Modem musi posiadać port RJ45 do połączenia z ESR-1221N.
- Komputer PC/notebook zgodny z Microsoft Windows z włączonym, adapterem sieciowym UPnP
- Kabel(e) sieciowy CAT 5, port RJ45 w komputerze PC/notebook.
- Przeglądarka Internetu (Microsoft Internet Explorer, Firefox i Netscape navigator.)

### **CZYNNOŚĆ 1**

Podłącz adapter zasilania dostarczony z ESR-1221N do gniazda zasilania z tyłu urządzenia. Sprawdź, czy świeci dioda LED zasilania na panelu przednim ESR-1221N.

### **CZYNNOŚĆ 2**

Połącz port **LAN ESR-1221N** i port **RJ45 komputera PC/notebook** kablem sieciowym.

### **CZYNNOŚĆ 3**

Uruchom w komputerze przeglądarkę sieci web. W polu adresu, wpisz domyślny adres IP `http://192.168.0.1`.



Pojawi się następujący ekran logowania. Wprowadź **admin** jako Username (Nazwa użytkownika) i Password (Hasło).



## CZYNNOŚĆ 4

W opcji WAN Access Type (Typ dostępu WAN), wybierz 'WAN Interface (Interfejs WAN)' i wybierz 'DHCP Client (Klient DHCP)'.

\*\*Dla użytkowników modemu kablowego, kliknij 'Clone MAC Address (Klonuj adres MAC)' i 'Apply Changes (Zastosuj zmiany)'

Wireless Network Broadband Router AP Router Mode

Status **Dynamic IP** Static IP PPPoE PPTP L2TP 3G

You can select the type of the account you have with your ISP provider.

Hostname :

MAC address :

DNS Servers

DNS Servers Type

First DNS Server

Second DNS Server

\* Dla użytkowników DSL, wystarczy kliknąć 'Apply Changes (Zastosuj zmiany)' w celu wdrożenia zmian przez system.

Wireless Network Broadband Router AP Router Mode

Status Dynamic IP Static IP **PPPoE** PPTP L2TP 3G

You can select the type of the account you have with your ISP provider.

Username :

Password :

Service Name

MTU :  (512 <= MTU Value <= 1492)

Authentication type :

Type :

Idle Timeout :  (1-1000 Minutes )

## CZYNNOŚĆ 5

Kliknij 'Wireless (Bezprzewodowe)' i wybierz 'Basic Settings (Ustawienia podstawowe)', aby zmienić SSID na wymagane i kliknij 'Apply Changes (Zastosuj zmiany)' w celu wdrożenia zmian.

**Wireless Network Broadband Router** AP Router Mode ▾

**Basic** | Advanced | Security | Filter | WPS | Client List | Policy

This page allows you to define SSID, and Channel for the wireless connection. These parameters are used for the wireless stations to connect to the Access Point.

**Radio :**  Enable  Disable

**Mode :** AP ▾

**Band :** 2.4 GHz (B+G) ▾

**Enable SSID#:** 1 ▾

**SSID1 :** 9350

**Auto Channel :**  Enable  Disable

**Channel :** 11 ▾

## CZYNNOŚĆ 6

### Ustawienia zabezpieczenia WiFi

Kliknij 'Wireless (Bezprzewodowe)' i kliknij 'Security (zabezpieczenie)', aby zdefiniować szyfrowanie WiFi. Następnie kliknij 'Apply Changes (Zastosuj zmiany)' w celu wdrożenia zmian.

**Wireless Network Broadband Router** AP Router Mode ▾

**Basic** | **Advanced** | Security | Filter | WPS | Client List | Policy

This page allows you setup the wireless security. Turn on WEP or WPA by using Encryption Keys could prevent any unauthorized access to your wireless network.

**SSID Selection :** 9350 ▾

**Broadcast SSID :** Enable ▾

**WMM :** Enable ▾

**Encryption :** Disable ▾

Enable 802.1x Authentication

- Disable
- WEP
- WPA pre-shared key
- WPA RADIUS

### Uwaga

**Po wykonaniu ustawień, wyłącz zasilanie modemu i routera. Włącz jednocześnie zasilanie modemu i routera i zaczekaj na pełne zainicjowanie modemu i routera. Sprawdź podręcznik użytkownika w celu uzyskania bardziej szczegółowych objaśnień każdego trybu działania.**

# ESR-1221N Ruter wireless de bandă largă

## Ghid de pornire rapidă

### DE VERIFICAT

- O unitate standard de CD-ROM
- Conexiunea la Internet trebuie să fie configurată și gata de utilizare (modem ADSL sau de cablu).
- Modemul trebuie să aibă port RJ45 pentru conectarea la ESR-1221N.
- PC/laptop compatibil cu sistemul de operare Windows de la Microsoft plus adaptor de rețea UPnP activat
- Cablu/cabluri de rețea CAT 5, port RJ45 la PC/laptop.
- Browser de Internet (Internet Explorer, Firefox și Netscape Navigator de la Microsoft.)

### PASUL 1

Conectați adaptorul de alimentare furnizat cu ESR-1221N la mufa de pe spatele acestui dispozitiv. Verificați dacă ledul de alimentare de pe partea frontală a dispozitivului ESR-1221N este APRINS.

### PASUL 2

Conectați portul **ESR-1221N LAN (LAN ESR-9850)** și portul **PC/Notebook RJ45 (RJ45 PC/laptop)** la cablul de rețea.

### PASUL 3

Deschideți browser-ul de Web pe computer. În câmpul adresei tastați adresa IP implicită `http://192.168.0.1`.



Se va afișa următorul ecran de Log in. Introduceți **admin** și în câmpul Username (Nume utilizator) și în câmpul Password (Parolă).



#### Pasul 4

Selectați „WAN Interface” (Interfață WAN) și selectați „DHCP Client” (Client DHCP) din tipul de acces WAN.

\*\*Pentru utilizatorii de modem de cablu faceți clic pe „Clone MAC Address” (Clonare adresă MAC) și pe „Apply Changes” (Se aplică modificările)

Wireless Network Broadband RouterAP Router Mode ▾

Status**Dynamic IP**Static IPPPPoEPPTPL2TP3G

You can select the type of the account you have with your ISP provider.

<b>Hostname :</b>	<input type="text"/>
<b>MAC address :</b>	<input type="text" value="000000000000"/> <input type="button" value="Clone MAC"/>
<b>DNS Servers</b>	
<b>DNS Servers Type</b>	From ISP ▾
<b>First DNS Server</b>	<input type="text" value="0.0.0.0"/>
<b>Second DNS Server</b>	<input type="text" value="0.0.0.0"/>

\* Pentru utilizatorii de DSL este necesar doar să faceți clic pe „Apply Changes” (Se aplică modificările) pentru ca sistemul să aplice modificările.

Wireless Network Broadband RouterAP Router Mode ▾

StatusDynamic IPStatic IP**PPPoE**PPTPL2TP3G

You can select the type of the account you have with your ISP provider.

<b>Username :</b>	<input type="text"/>
<b>Password :</b>	<input type="text"/>
<b>Service Name</b>	<input type="text"/>
<b>MTU :</b>	<input type="text" value="1492"/> (512<=MTU Value <=1492)
<b>Authentication type :</b>	Auto ▾
<b>Type :</b>	Keep Connection ▾
<b>Idle Timeout :</b>	<input type="text" value="10"/> (1-1000 Minutes )

#### Pasul 5

Faceți clic pe „Wireless” (Wireless) și selectați „Basic Settings” (Setări de bază) pentru a modifica corespunzător identitatea SSID-ului și faceți clic pe „Apply Changes” (Se aplică modificările) pentru aplicarea acestora.



**Wireless Network Broadband Router** AP Router Mode ▾

**Basic** | **Advanced** | **Security** | **Filter** | **WPS** | **Client List** | **Policy**

This page allows you to define SSID, and Channel for the wireless connection. These parameters are used for the wireless stations to connect to the Access Point.

**Radio :**  Enable  Disable

**Mode :** AP ▾

**Band :** 2.4 GHz (B+G) ▾

**Enable SSID#:** 1 ▾

**SSID1 :** 9350

**Auto Channel :**  Enable  Disable

**Channel :** 11 ▾

## Pasul 6

### Configurarea securității WiFi

Faceți clic pe „Wireless” (Wireless) și faceți clic pe „Security” (Securitate) pentru a defini criptarea WiFi. Faceți apoi clic pe „Apply Changes” (Se aplică modificările) pentru aplicarea acestora.

**Wireless Network Broadband Router** AP Router Mode ▾

**Basic** | **Advanced** | **Security** | **Filter** | **WPS** | **Client List** | **Policy**

This page allows you setup the wireless security. Turn on WEP or WPA by using Encryption Keys could prevent any unauthorized access to your wireless network.

**SSID Selection :** 9350 ▾

**Broadcast SSID :** Enable ▾

**WMM :** Enable ▾

**Encryption :** Disable ▾

**Enable 802.1x Authentication**

Disable  
 WEP  
 WPA pre-shared key  
 WPA RADIUS

## Notă

După finalizarea configurării, opriți modemul și ruterul. Porniți modemul și ruterul în același timp și așteptați ca ambele dispozitive să-și finalizeze procesul de inițializare. Consultați Manualul de utilizare pentru explicații mai detaliate referitoare la fiecare mod de operare.

# ESR-1221N Ruter wireless de bandă largă

## Ghid de pornire rapidă

### DE VERIFICAT

- O unitate standard de CD-ROM
- Conexiunea la Internet trebuie să fie configurată și gata de utilizare (modem ADSL sau de cablu).
- Modemul trebuie să aibă port RJ45 pentru conectarea la ESR-1221N.
- PC/laptop compatibil cu sistemul de operare Windows de la Microsoft plus adaptor de rețea UPnP activat
- Cablu/cabluri de rețea CAT 5, port RJ45 la PC/laptop.
- Browser de Internet (Internet Explorer, Firefox și Netscape Navigator de la Microsoft.)

### PASUL 1

Conectați adaptorul de alimentare furnizat cu ESR-1221N la mufa de pe spatele acestui dispozitiv. Verificați dacă ledul de alimentare de pe partea frontală a dispozitivului ESR-1221N este APRINS.

### PASUL 2

Conectați portul **ESR-1221N LAN (LAN ESR-9850)** și portul **PC/Notebook RJ45 (RJ45 PC/laptop)** la cablul de rețea.

### PASUL 3

Deschideți browser-ul de Web pe computer. În câmpul adresei tastați adresa IP implicită `http://192.168.0.1`.



Se va afișa următorul ecran de Log in. Introduceți **admin** și în câmpul Username (Nume utilizator) și în câmpul Password (Parolă).



#### Pasul 4

Selectați „WAN Interface” (Interfață WAN) și selectați „DHCP Client” (Client DHCP) din tipul de acces WAN.

\*\*Pentru utilizatorii de modem de cablu faceți clic pe „Clone MAC Address” (Clonare adresă MAC) și pe „Apply Changes” (Se aplică modificările)

Wireless Network Broadband Router AP Router Mode

Status **Dynamic IP** Static IP PPPoE PPTP L2TP 3G

You can select the type of the account you have with your ISP provider.

Hostname :

MAC address :

DNS Servers

DNS Servers Type

First DNS Server

Second DNS Server

\* Pentru utilizatorii de DSL este necesar doar să faceți clic pe „Apply Changes” (Se aplică modificările) pentru ca sistemul să aplice modificările.

Wireless Network Broadband Router AP Router Mode

Status Dynamic IP Static IP **PPPoE** PPTP L2TP 3G

You can select the type of the account you have with your ISP provider.

Username :

Password :

Service Name

MTU :  (512<=MTU Value <=1492)

Authentication type :

Type :

Idle Timeout :  (1-1000 Minutes )

#### Pasul 5

Faceți clic pe „Wireless” (Wireless) și selectați „Basic Settings” (Setări de bază) pentru a modifica corespunzător identitatea SSID-ului și faceți clic pe „Apply Changes” (Se aplică modificările) pentru aplicarea acestora.

**Wireless Network Broadband Router** AP Router Mode

**Basic** | **Advanced** | **Security** | **Filter** | **WPS** | **Client List** | **Policy**

This page allows you to define SSID, and Channel for the wireless connection. These parameters are used for the wireless stations to connect to the Access Point.

**Radio :**  Enable  Disable

**Mode :** AP

**Band :** 2.4 GHz (B+G)

**Enable SSID#:** 1

**SSID1 :** 9350

**Auto Channel :**  Enable  Disable

**Channel :** 11

## Pasul 6

### Configurarea securității WiFi

Faceți clic pe „Wireless” (Wireless) și faceți clic pe „Security” (Securitate) pentru a defini criptarea WiFi. Faceți apoi clic pe „Apply Changes” (Se aplică modificările) pentru aplicarea acestora.

**Wireless Network Broadband Router** AP Router Mode

**Basic** | **Advanced** | **Security** | **Filter** | **WPS** | **Client List** | **Policy**

This page allows you setup the wireless security. Turn on WEP or WPA by using Encryption Keys could prevent any unauthorized access to your wireless network.

**SSID Selection :** 9350

**Broadcast SSID :** Enable

**WMM :** Enable

**Encryption :** Disable   
 Enable 802.1x Authentication

## Notă

După finalizarea configurării, opriți modemul și ruterul. Porniți modemul și ruterul în același timp și așteptați ca ambele dispozitive să-și finalizeze procesul de inițializare. Consultați Manualul de utilizare pentru explicații mai detaliate referitoare la fiecare mod de operare.